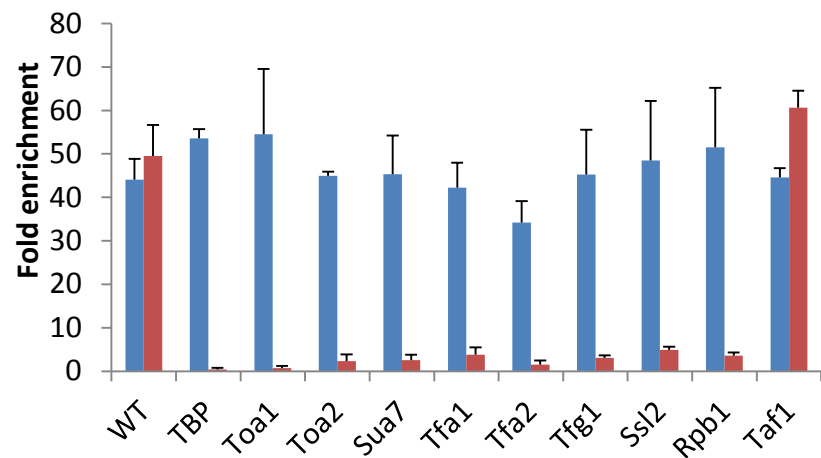


Figure 1 – figure supplement 1

A

### Pol II at *PMA1* coding region



### Pol II at *RPL28* coding region

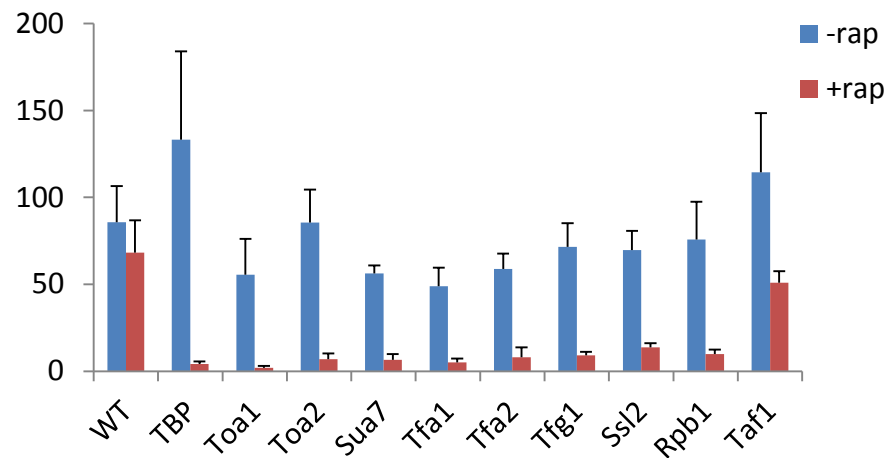


Figure 3 – figure supplement 1

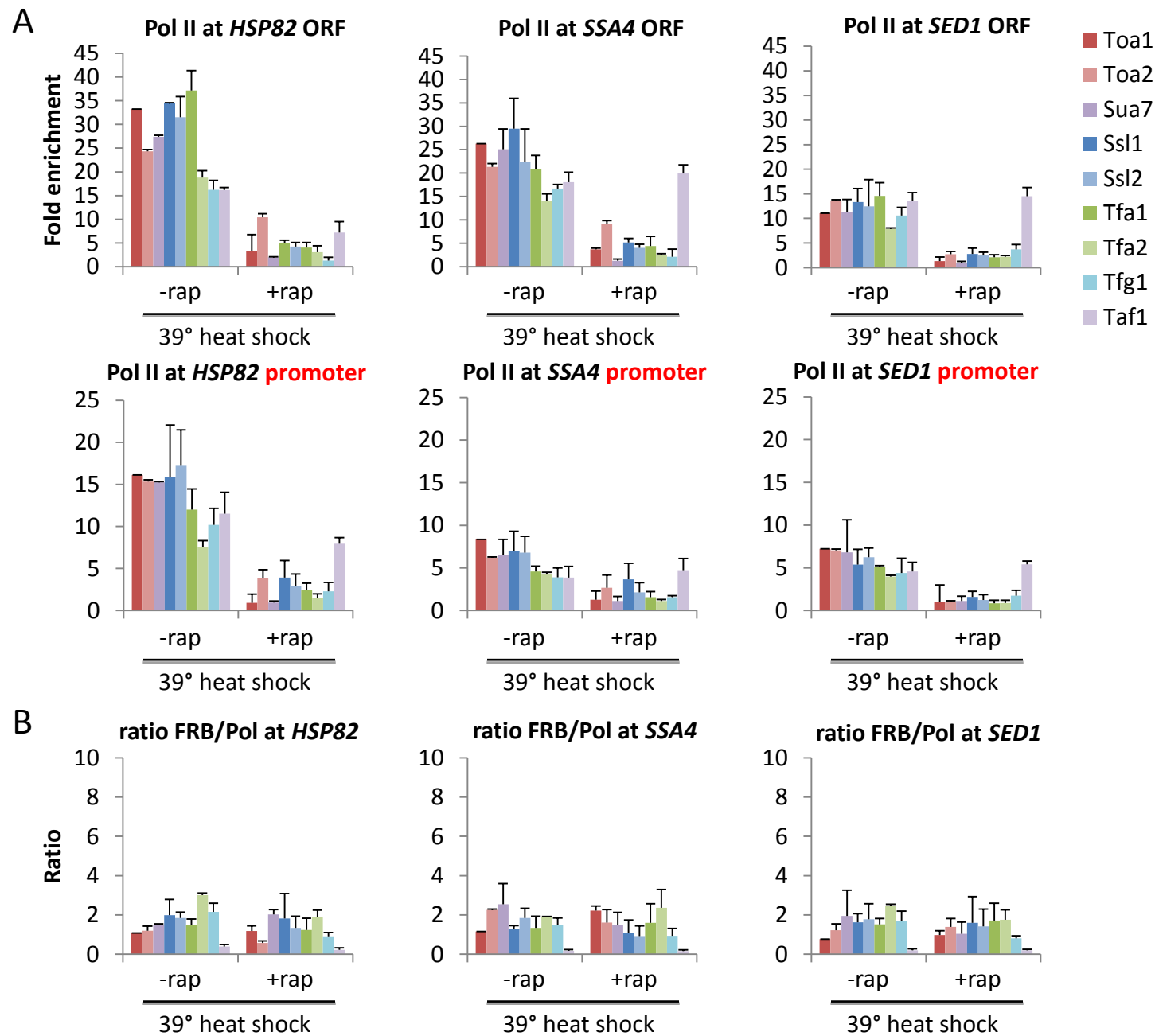
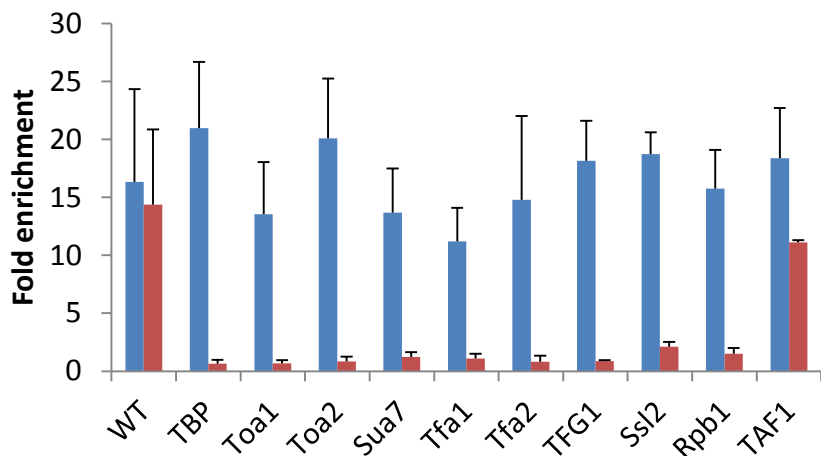


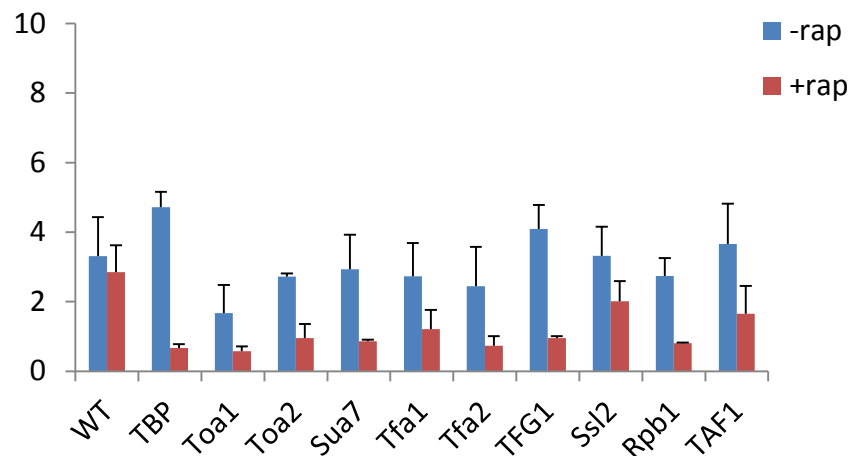
Figure 4 – figure supplement 1

A

**TBP at *PMA1* promoter**

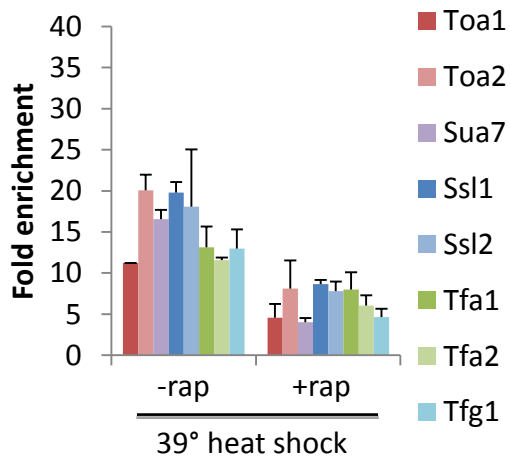


**TBP at *ACT1* promoter**

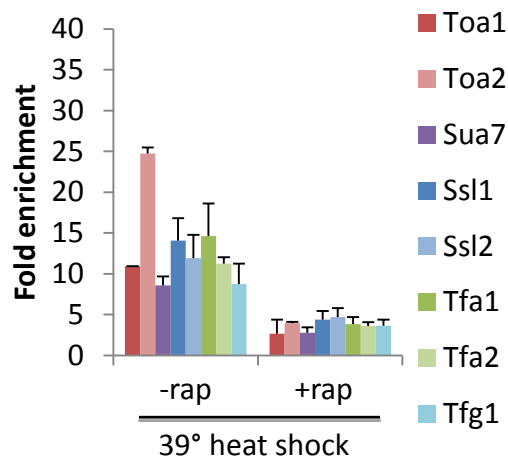


B

**TBP at *SSA4* promoter**



**TBP at *SED1* promoter**



continued on next page

Figure 4 – figure supplement 1 continued

C

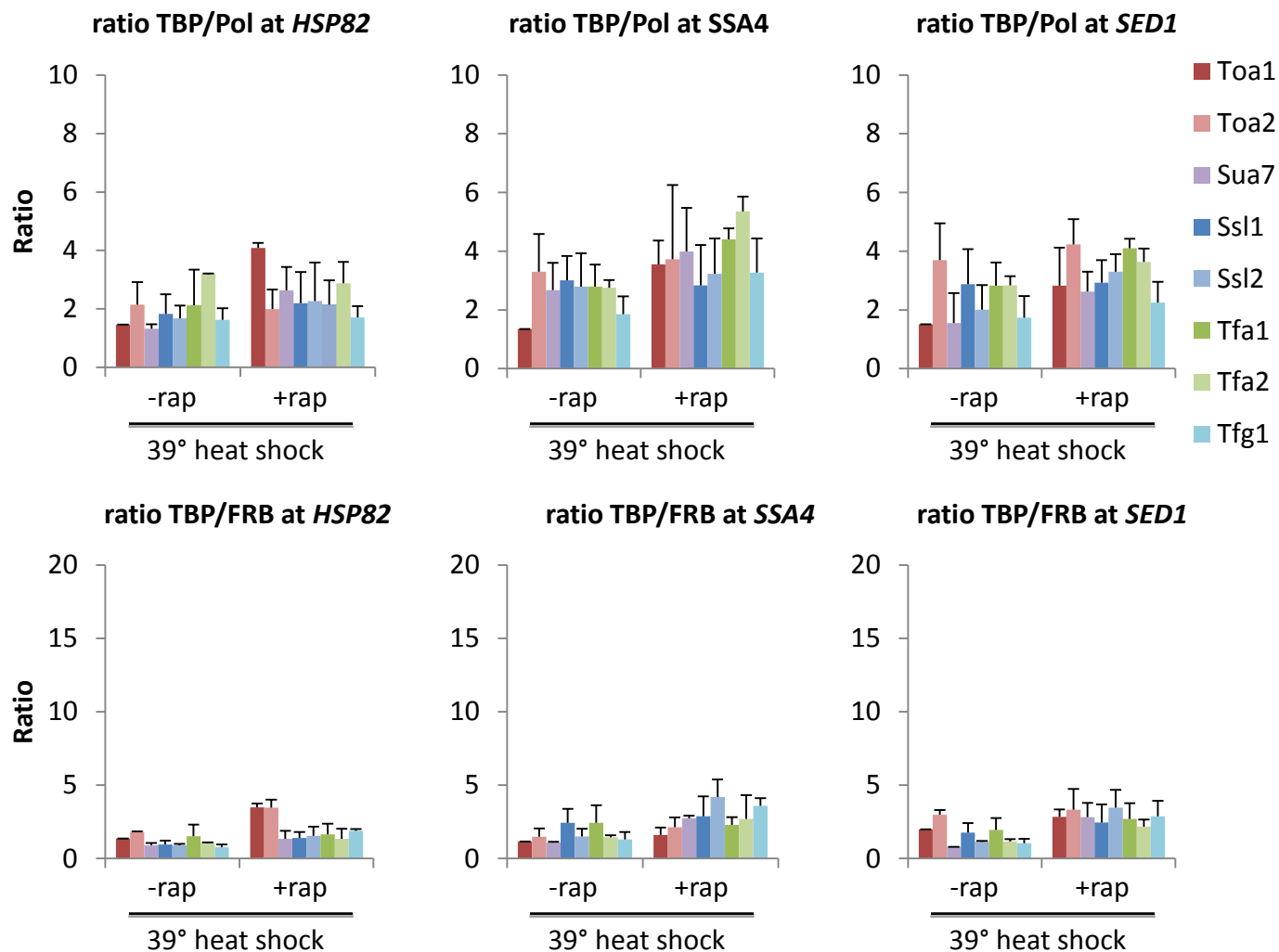
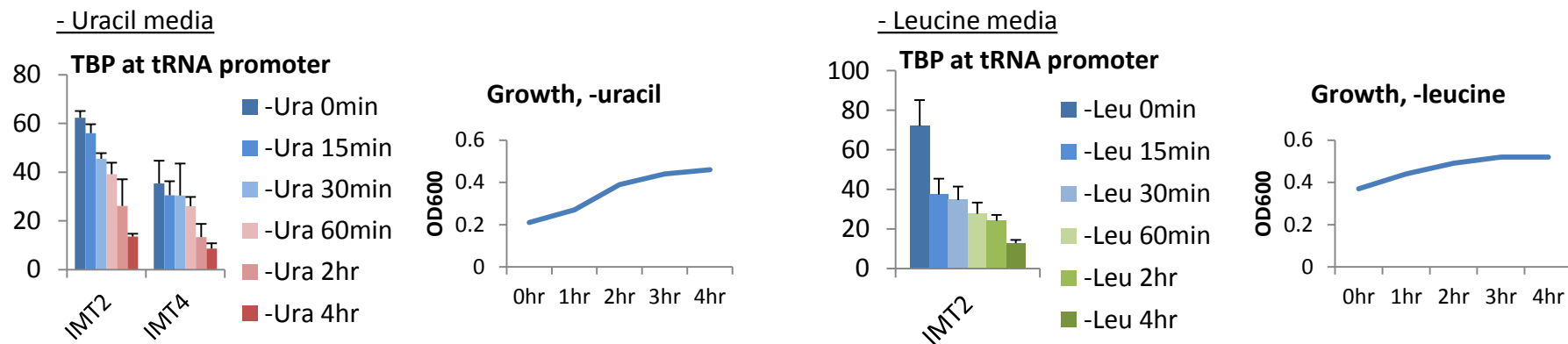
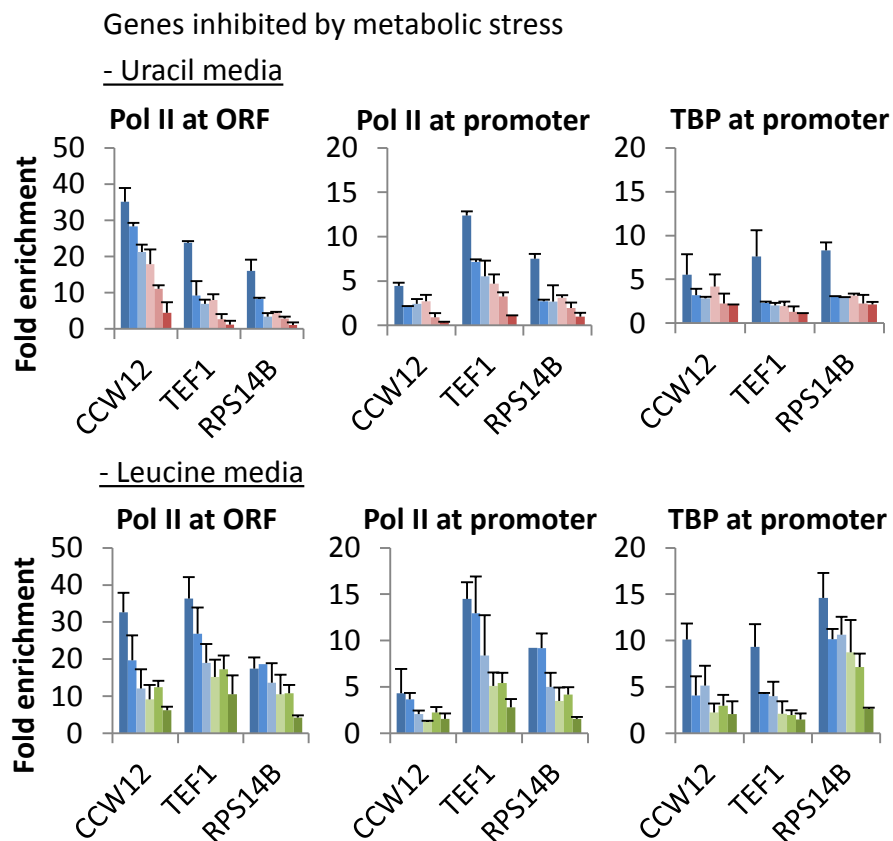


Figure 5 – figure supplement 1

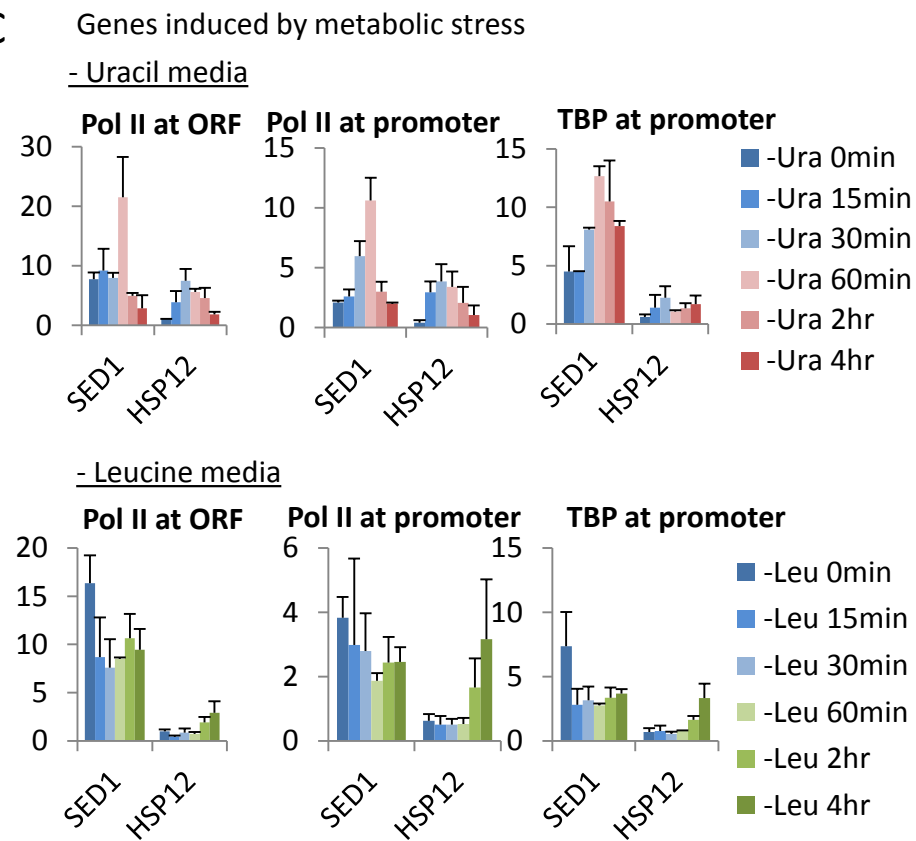
A



B



C



continued on next page

Figure 5 – figure supplement 1 continued

D

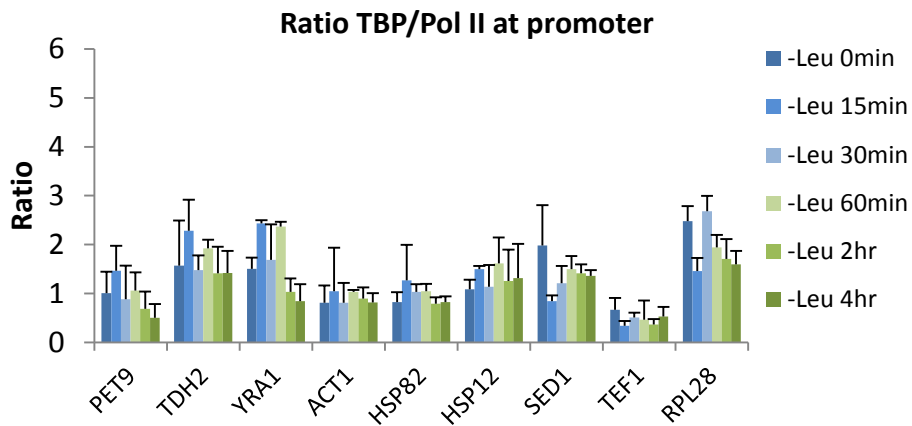
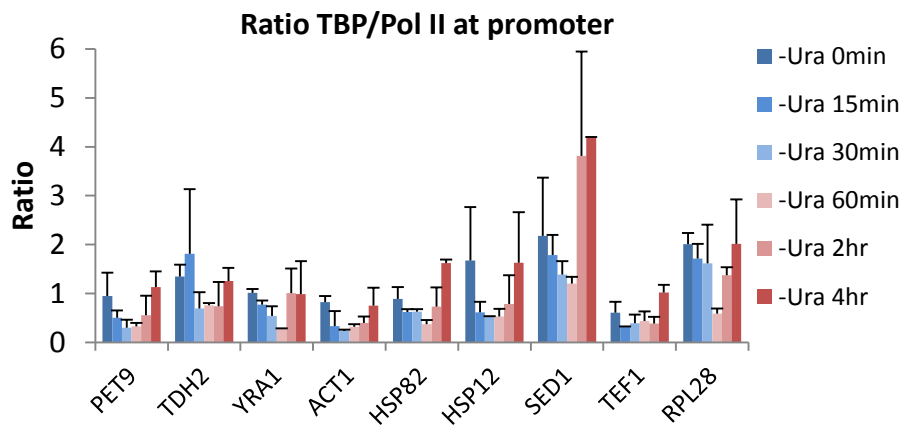


Figure 7 – figure supplement 1

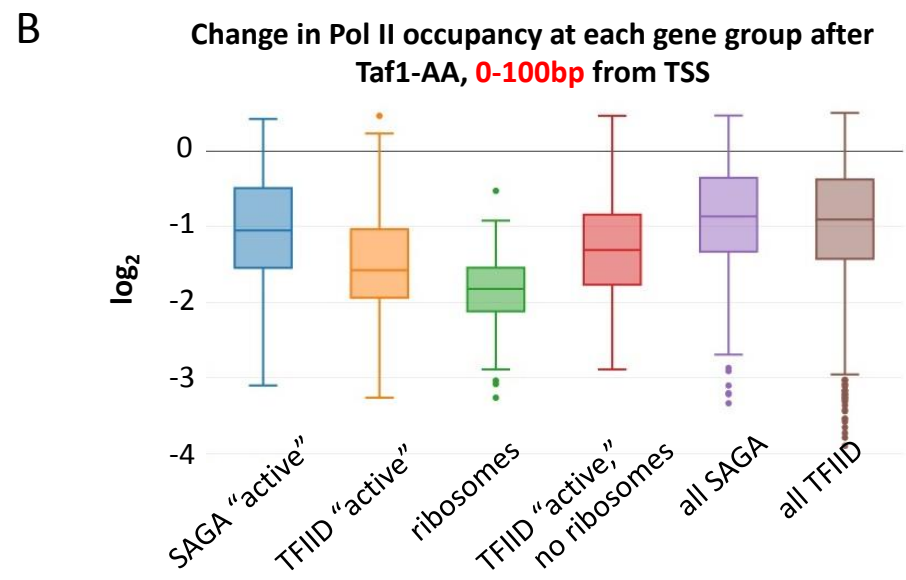
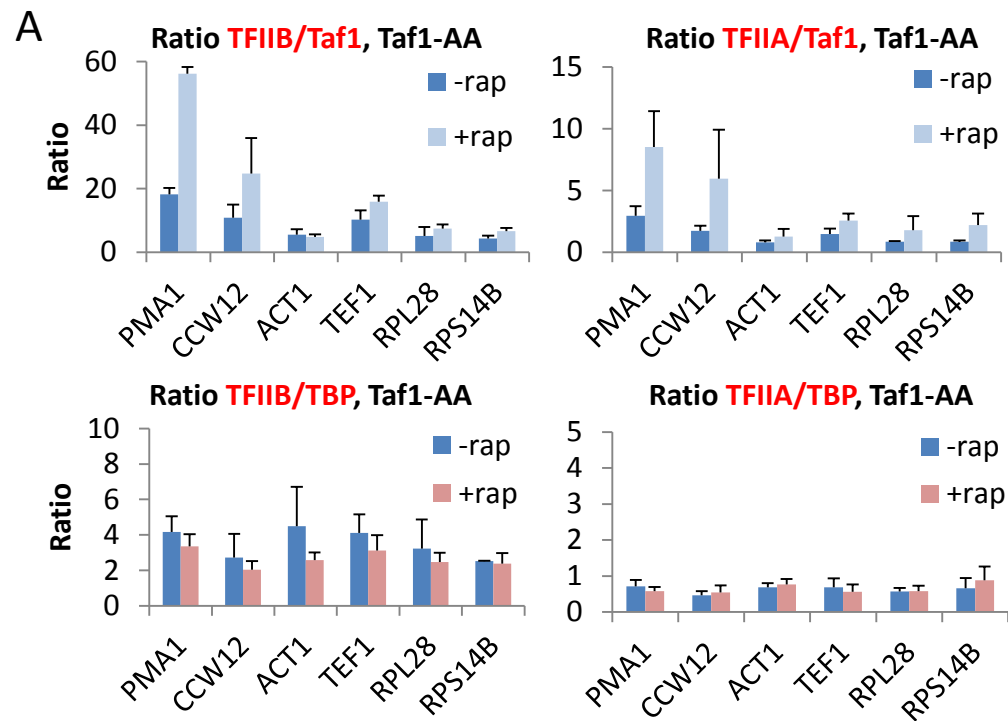
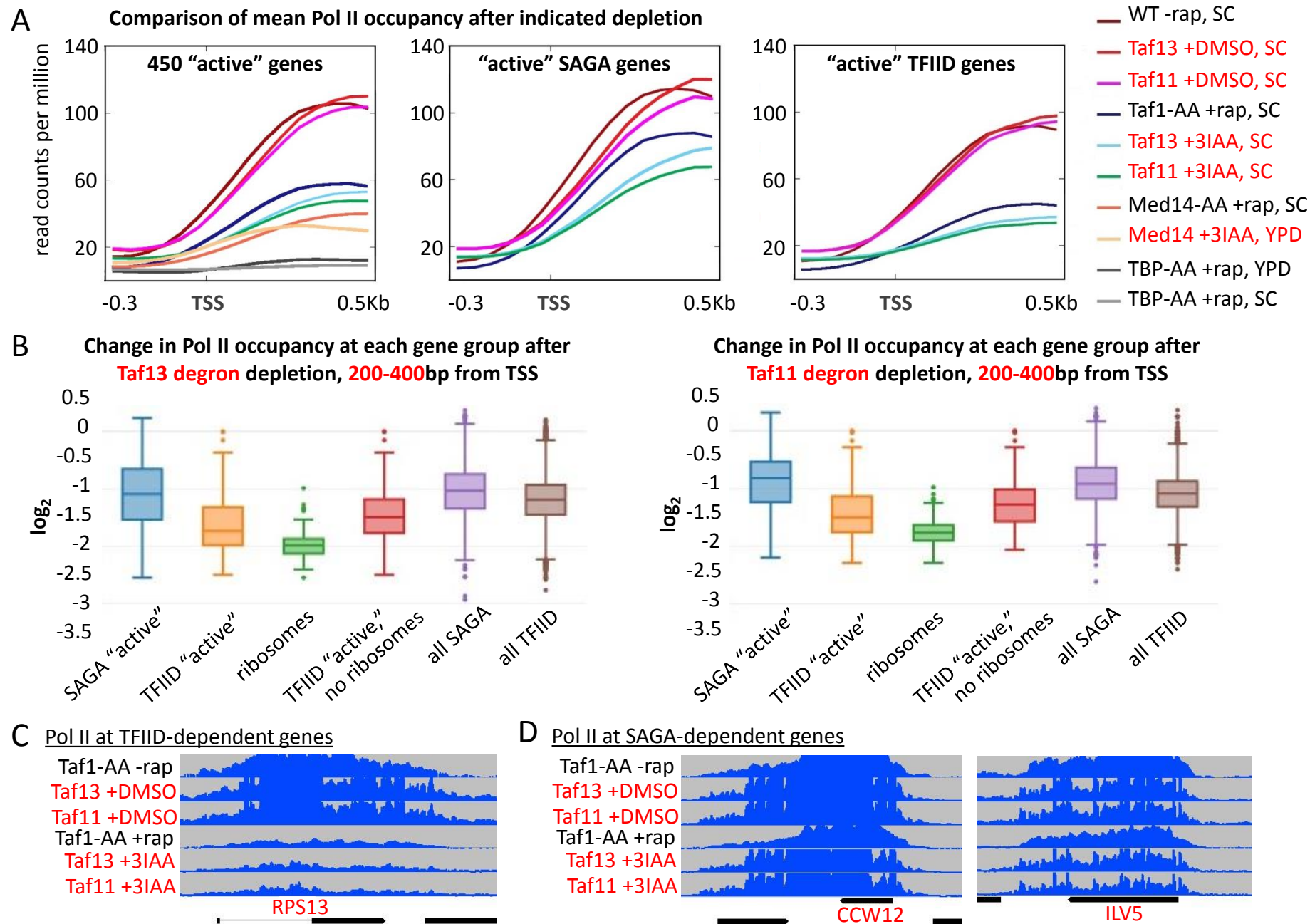


Figure 7 – figure supplement 2





## Table S1. Yeast Strains

### Strains used

<b>Strain name</b>	<b>Genotype</b>	<b>Comment</b>
HHY168	MATalpha, tor1-1, fpr1::NAT, RPL1:	Wildtype control strain; Haruki et al., 2008
KHW75	MATalpha, tor1-1, fpr1::NAT, RPL1:	Pol II (Rpb1) anchor-away strain
KHW76	MATalpha, tor1-1, fpr1::NAT, RPL1:	TBP (Spt15) anchor-away strain
KHW125	MATalpha, tor1-1, fpr1::NAT, RPL1:	TFIIE (Tfa1) anchor-away strain
KHW124	MATalpha, tor1-1, fpr1::NAT, RPL1:	TFIIE (Tfa2) anchor-away strain
KHW127	MATalpha, tor1-1, fpr1::NAT, RPL1:	Kin28 anchor-away strain
YJ90	MATalpha, tor1-1, fpr1::NAT, RPL1:	TFIIH (Ssl1) anchor-away strain
NP137	MATalpha, tor1-1, fpr1::NAT, RPL1:	TFIIH (Ssl2) anchor-away strain
KHW129	MATalpha, tor1-1, fpr1::NAT, RPL1:	TFIIB (Sua7) anchor-away strain
KHW130	MATalpha, tor1-1, fpr1::NAT, RPL1:	TFIIA (Toa1) anchor-away strain
KHW131	MATalpha, tor1-1, fpr1::NAT, RPL1:	TFIIA (Toa2) anchor-away strain
KHW132	MATalpha, tor1-1, fpr1::NAT, RPL1:	TFIID (Taf1) anchor-away strain
KHW134	MATalpha, tor1-1, fpr1::NAT, RPL1:	TFIIF (Tfg1) anchor-away strain
YJ127	MATalpha, tor1-1, fpr1::NAT, RPL1:	Spt16 anchor-away strain
KHW258	MATalpha, tor1-1, fpr1::NAT, RPL1:	Rgr1 anchor-away strain